

## ON

### ZAD515

Dispenser a muro / Wall mounted soap dispenser.



Dispenser a muro

Wall mounted soap dispenser.

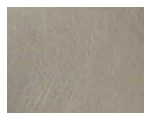
### ON

ZAD515

#### Finiture / Finishes



Cromo / Chrome



**C3**

Nickel Spazzolato / Brushed Nickel



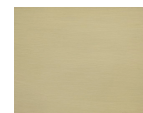
**C8**

Nickel Lucido / Polished Nickel



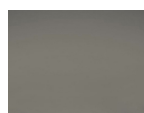
**C40**

Oro / Gold



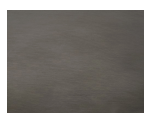
**C41**

Oro spazzolato / Brushed Gold



**C50**

Metal Black / Metal Black



**C51**

Metal Black spazzolato / Brushed Metal Black



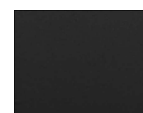
**W1**

Bianco Opaco Goffrato / Embossed Matt White



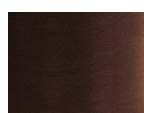
**N1**

Nero Opaco Goffrato / Embossed Matt Black



**N6**

Nero opaco / Matt black



**P21**

PVD brushed chocolate / PVD brushed chocolate



**P30**

British Gold PVD / British Gold PVD



**P31**

Brushed PVD British gold / Brushed PVD British gold



**P41**

PVD Oro Spazzolato / PVD Brushed Gold



**P60**

Platino PVD / Platinum PVD



**P80**

Total black PVD / Total black PVD



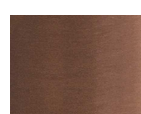
**P81**

Brushed total black PVD / Brushed total black PVD



**P90**

Copper PVD / Copper PVD



**P91**

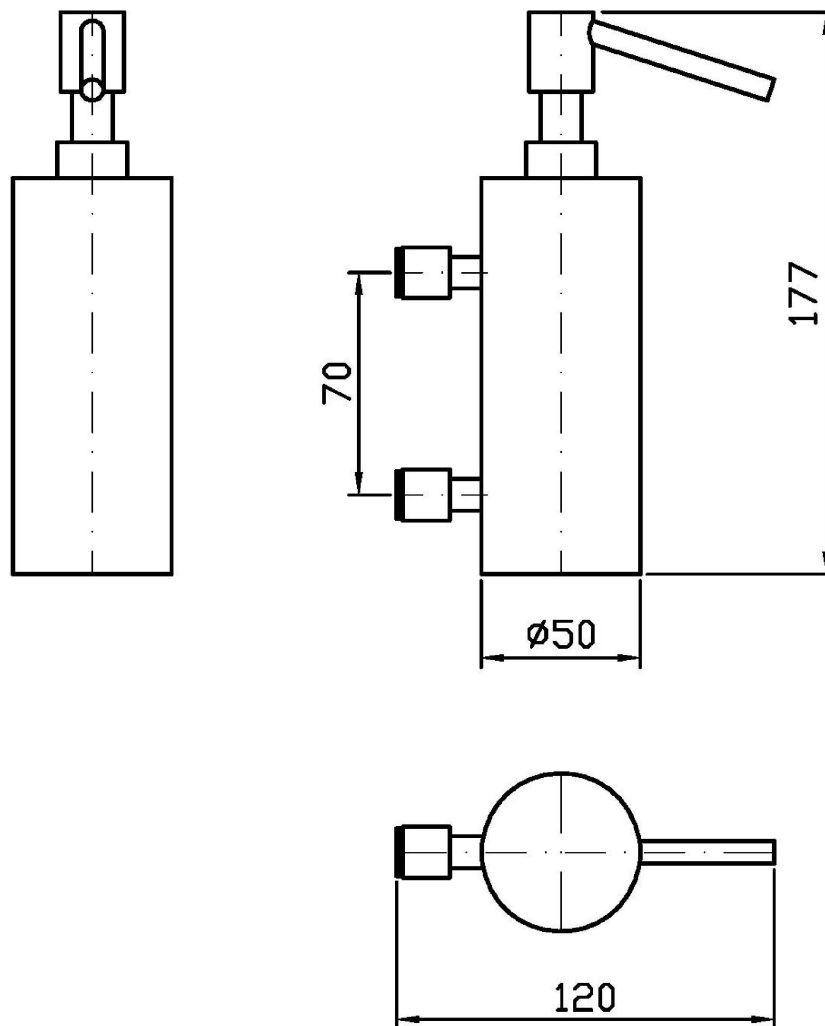
Brushed PVD Copper / Brushed PVD Copper

#### Note / Notes

## ON

ZAD515

Disegno Complessivo / Overall Drawing



## ON

### ZAD515

### Pesi e Misure / Weights and Sizes

Peso ( Kg ) Weight ( lb )	0,61 ( Kg )	1,36 ( lb )
Volume test ( dc3 ) - ( in3 )	2,00 ( dc3 )	122,05 ( in3 )
h ( mm ) - ( in )	70,00 ( mm )	2,76 ( in )
L1 ( mm ) - ( in )	120,00 ( mm )	4,72 ( in )
L2 ( mm ) - ( in )	240,00 ( mm )	9,45 ( in )

