

## SHOWER

Z94731

Doccetta a 3 getti. / Handshower 3 jets.



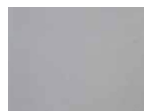
Doccetta a 3 getti in ABS, con sistema anticalcare.  
Water Saving - portata d'acqua uguale o inferiore a 9 l/min.

ABS handshower 3 jets, with anti-limescale system.  
Water Saving - water flow rate of 9 l/min or less.

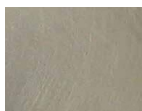
## SHOWER

Z94731

### Finiture / Finishes



Cromo / Chrome



**C3**

Nickel Spazzolato / Brushed Nickel



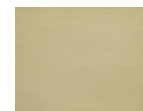
**C8**

Nickel Lucido / Polished Nickel



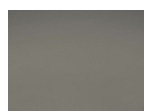
**C40**

Oro / Gold



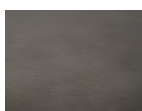
**C41**

Oro spazzolato / Brushed Gold



**C50**

Metal Black / Metal Black



**C51**

Metal Black spazzolato / Brushed Metal Black



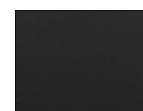
**W1**

Bianco Opaco Goffrato / Embossed Matt White



**N1**

Nero Opaco Goffrato / Embossed Matt Black



**N6**

Nero opaco / Matt black



**J3**

Glossy gesso / Glossy gesso



**K7**

Pearl cipria / Pearl cipria



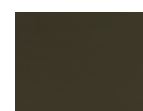
**R6**

Pearl chili / Pearl chili



**V7**

Pearl salvia / Pearl salvia



**V8**

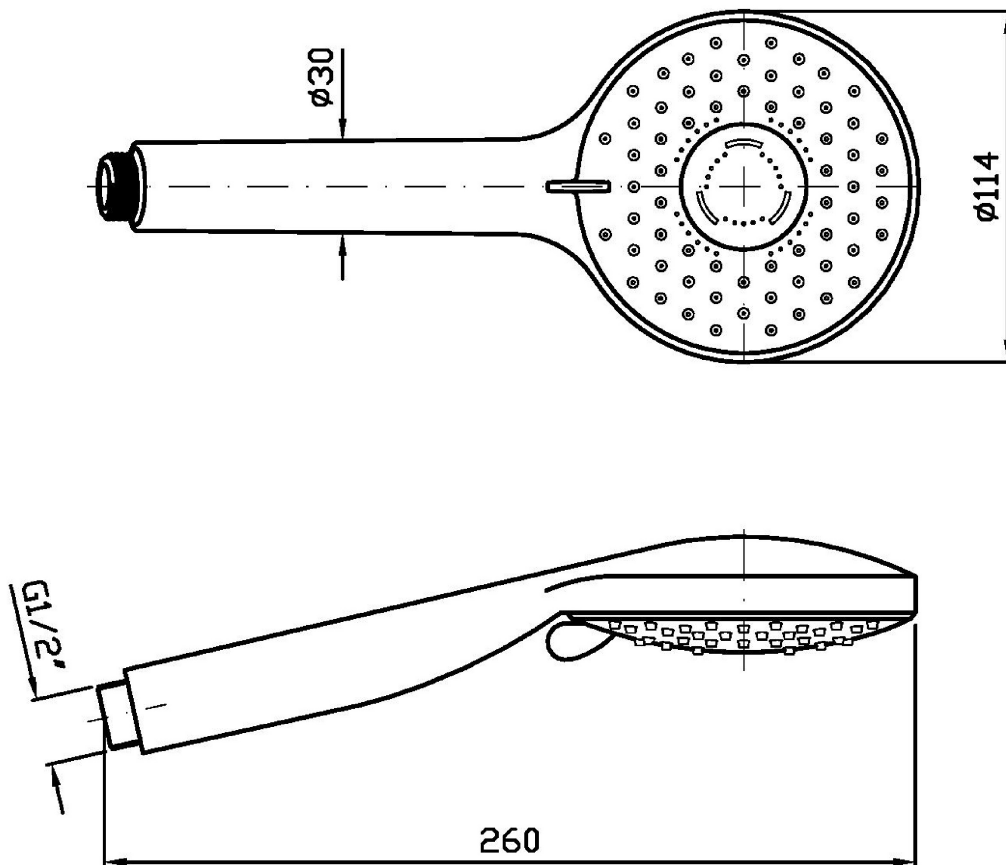
Matt mirto / Matt mirto

### Note / Notes

## SHOWER

Z94731

Disegno Complessivo / Overall Drawing

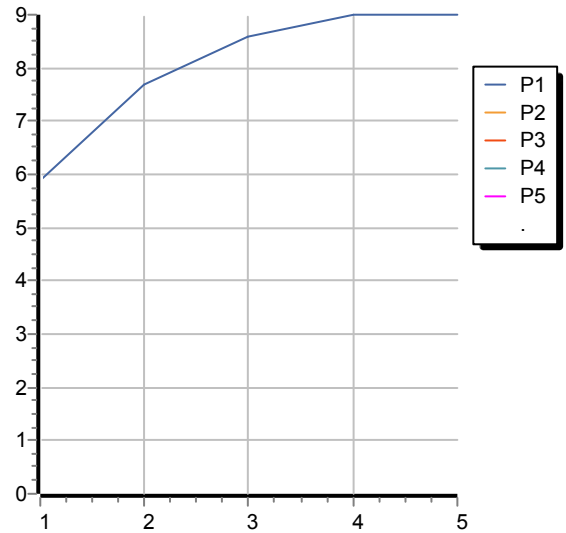


## SHOWER

Z94731

Portate / Flowrates (lt/min)

PRESSIONE PRESSURE	1 BAR	2 BAR	3 BAR	4 BAR	5 BAR
P1 DOCCETTA HANDSHOWER	5,9	7,7	8,6	9	9
P2					
P3					
P4					
P5					



## SHOWER

Z94731

Pesi e Misure / Weights and Sizes

Peso ( Kg ) Weight ( lb )	0,31 ( Kg )	0,69 ( lb )
Volume test ( dc3 ) - ( in3 )	1,56 ( dc3 )	95,20 ( in3 )
h ( mm ) - ( in )	74,00 ( mm )	2,91 ( in )
L1 ( mm ) - ( in )	86,00 ( mm )	3,39 ( in )
L2 ( mm ) - ( in )	245,00 ( mm )	9,65 ( in )

