

SHOWER

Z94300

Doccetta a getto fisso. / Handshower simple jet.



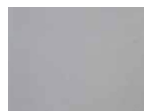
Doccetta a getto fisso in ottone, con sistema anticalcare.
Water Saving - portata d'acqua uguale o inferiore a 9 l/min.

Brass handshower simple jet, with anti-limescale system.
Water Saving - water flow rate of 9 l/min or less.

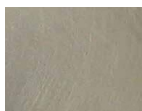
SHOWER

Z94300

Finiture / Finishes



Cromo / Chrome



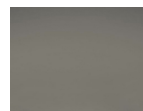
C3

Nickel Spazzolato / Brushed Nickel



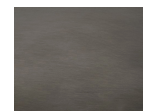
C8

Nickel Lucido / Polished Nickel



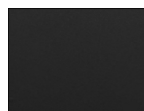
C50

Metal Black / Metal Black



C51

Metal Black spazzolato / Brushed Metal Black



N6

Nero opaco / Matt black



P21

PVD brushed chocolate / PVD brushed chocolate



P30

British Gold PVD / British Gold PVD



P31

Brushed PVD British gold / Brushed PVD British gold



P41

PVD Oro Spazzolato / PVD Brushed Gold



P60

Platino PVD / Platinum PVD



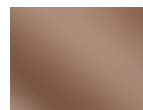
P80

Total black PVD / Total black PVD



P81

Brushed total black PVD / Brushed total black PVD



P90

Copper PVD / Copper PVD



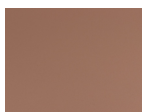
P91

Brushed PVD Copper / Brushed PVD Copper



J3

Glossy gesso / Glossy gesso



K7

Pearl cipria / Pearl cipria



R6

Pearl chili / Pearl chili



V7

Pearl salvia / Pearl salvia



V8

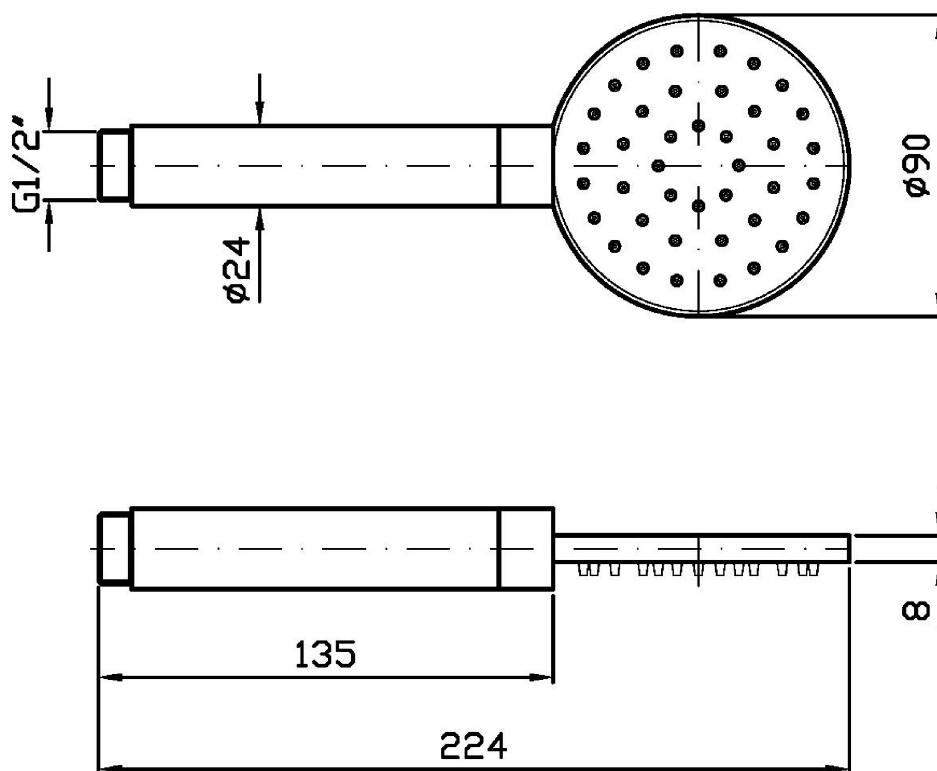
Matt mirto / Matt mirto

Note / Notes

SHOWER

Z94300

Disegno Complessivo / Overall Drawing

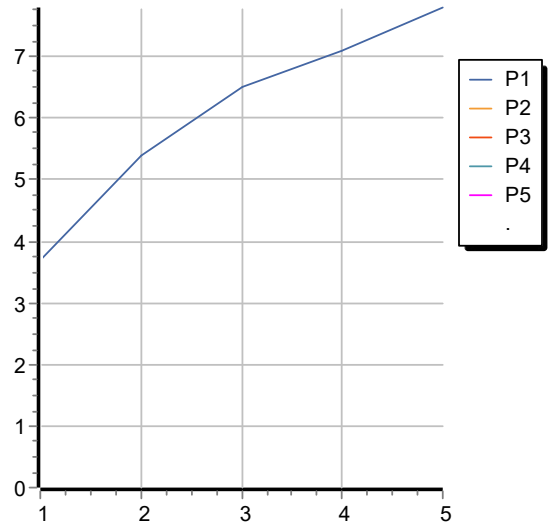


SHOWER

Z94300

Portate / Flowrates (lt/min)

PRESSIONE PRESSURE	1 BAR	2 BAR	3 BAR	4 BAR	5 BAR
P1 DOCCETTA HANDSHOWER	3,7	5,4	6,5	7,1	7,8
P2					
P3					
P4					
P5					



SHOWER

Z94300

Pesi e Misure / Weights and Sizes

Peso (Kg) Weight (lb)	0,50 (Kg)	1,10 (lb)
Volume test (dc3) - (in3)	1,15 (dc3)	70,18 (in3)
h (mm) - (in)	45,00 (mm)	1,77 (in)
L1 (mm) - (in)	134,00 (mm)	5,28 (in)
L2 (mm) - (in)	190,00 (mm)	7,48 (in)

